

## PSVue® Fluorescent Kits for Labeling Apoptotic Cells, Bacteria and Other Anionic Membranes

**PSVue®** reagents are a family of fluorescent probes containing a bis(zinc<sup>2+</sup>-dipicolylamine) group (Zn-DPA), a motif that has been found to bind with high selectivity to surfaces enriched with anionic phospholipids, especially phosphatidylserine (PS) exposed on cell membranes. The fluorescent part of the probe is a reporter element that provides a means of detecting the probe once it is bound to the membrane of interest.

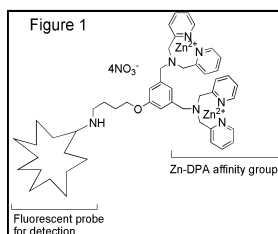
### Key Features of PSVue® Probes:

- Bind to a variety of cell types which have negatively charged phospholipids exposed on their membranes including apoptotic cells [1], necrotic cells [2], Gram+ and Gram- bacteria [3-5], activated cells, tumor vascular endothelial cells, viruses, etc.
- Available in a range of detection wavelengths from long-UV to near infrared.
- Suitable for *in vitro* and *in vivo* use.
- Suitable for high-throughput screening assays.
- Bind to the same PS site as annexin-V.

### Advantages of PSVue® over Fluorescent Annexin-V:

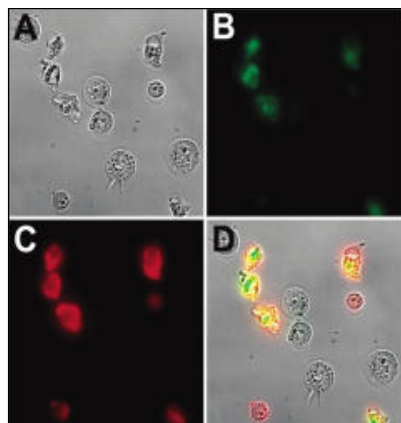
- Binding kinetics are fast; annexin-V binding is slow [6,7]
- Binding is Ca<sup>2+</sup> independent; means no artifacts due to activation of nonspecific membrane scramblases by Ca<sup>2+</sup> [8].
- Cheap compared to most annexin-V fluorescent analogs
- Apoptosis can be detected under a wide variety of conditions (e.g. in presence of 10% serum, temps from 4 to 37°C) [8].
- Can provide more intense labeling due to their much smaller size (i.e. >10 PSVue® molecules can bind to the same area as 1 annexin V molecule) [9].

### General Structure of PSVue® Probes (Figure 1)



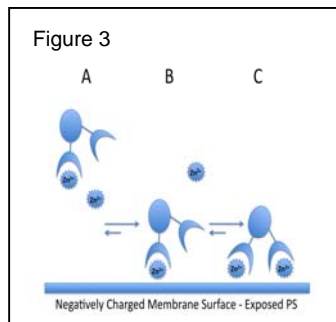
### In Vitro Studies :

Several *in vitro* studies have shown that PSVue® compounds stain the same apoptotic cells as fluorescently labeled annexin-V indicating that they are excellent small molecule mimics of annexin-V. An example using PSVue® 794 is shown in Figure 2 [2].



**Figure 2.** Micrographs (60X magnification) of Jurkat cells, treated with cytotoxic camptothecin (10 μM) for 3.5 h and stained simultaneously with Annexin V-Alexa Fluor 488, and PSVue® 794 (10 μM). Brightfield image of the entire field of cells (A); cells stained with Annexin V-Alexa Fluor 488 (B); cells stained with PSVue® 794 (C); overlay of images A, B, and C (D). No staining of healthy cells was observed in the absence of camptothecin. (Images courtesy of Dr. Bradley Smith of University of Notre Dame)

### Proposed Model of Membrane Binding:



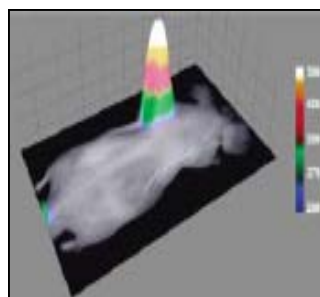
**Figure 3** illustrates the 3 component assembly process that results in high affinity association of PSVue® with PS-rich membranes. [8,9] Under physiologic concentrations of Zn<sup>2+</sup> the predominant coordination complex is the mono-zinc species (species A). The binding of species A to the anionic PS exposed membrane (species B) would promote the binding of the second Zn<sup>2+</sup> with subsequent binding to the membrane forming a bivalently-bound species C. **PSVue® reagents are selective for membrane phosphates and do not stain the cytosol.**

### Selected In Vivo Studies:

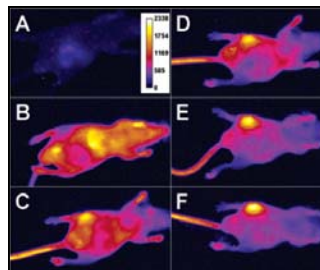
The *in vivo* images below show that in animal models of prostate cancer (Figure 4)[2], mammary cancer (Figure 5) [2] and bacterial infections (S. aureus) (Figure 6) [4], PSVue® targeted to the disease



**Figure 4.** X-ray and fluorescence overlay image of a rat prostate tumor model at 24 h postinjection of PSVue® 794 (4.0 mg/kg) shows clear evidence of selective accumulation in the tumor. The image was acquired at a 190 mm field of view. (Image courtesy of Dr. Bradley Smith of University of Notre Dame)

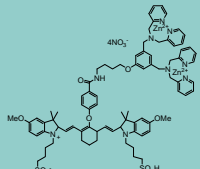
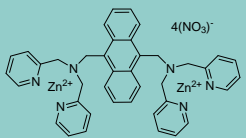
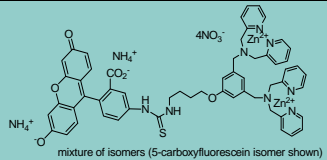
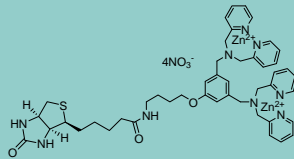
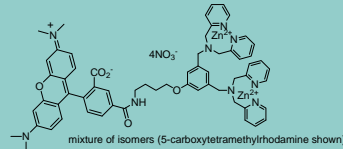
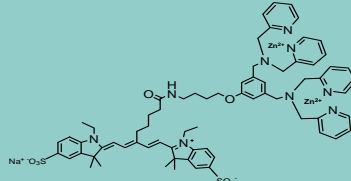


**Figure 5.** Representative overlay image of a nude mouse with an EMT-6 mammary tumor. Brightfield and fluorescence intensity images were acquired 24h following injection of PSVue® 794 and show clear evidence of selective accumulation in the tumor. The image was taken at a 80 mm field of view. (Image courtesy of Dr. Bradley Smith of University of Notre Dame)



**Figure 6.** Optical image of a mouse with a S. aureus infection in the left rear thigh muscle. Images were acquired before (A), and immediately following (B), iv injection of PSVue® 794 and at 6h (C), 12h (D), 18 h (E) and 21 h (F). (Images courtesy of Dr. Bradley Smith of University of Notre Dame)

PSVue® PRODUCT LIST

Catalog Number	Name	Structure	Description	Price
P-1001	PSVue® 794		The PSVue 794 (formerly PSS-794) reagent kit contains components to provide ~ 0.68 mL of a 1 mM solution of PSVue 794 in aqueous solution. The compound exhibits absorbance and fluorescence excitation maximum at 794 nm and emission maximum at 810 nm. The labeling vehicle provided with the kit (Diluent X) is designed to maximize dye solubility and is suitable for <i>in vitro</i> and <i>in vivo</i> use.	\$281.00
P-1002	PSVue® 380		The PSVue 380 (formerly PSS-380) reagent kit contains components to provide ~ 0.40 mL of a 2 mM solution of PSVue 380. The compound has an absorbance max at 380 nm and a fluorescence emission max at 440 nm.	\$239.00
P-1003	PSVue® 480		The PSVue 480 (formerly PSS-480) reagent kit contains components to provide ~0.5 mL of a 1 mM solution of PSVue 480. The compound has an absorbance max at 480 nm and a fluorescence emission max at 519 nm	\$239.00
P-1004	PSVue® Biotin		Vial contains 1mg of solid. PSVue biotin can be complexed with streptavidin-coated quantum dots (not provided) for <i>in vivo</i> and <i>in vitro</i> use. Procedures to formulate PSVue biotin and prepare the PSVue biotin-streptavidin-coated quantum dot complex are provided.	\$186.00
P-1005	PSVue® 550		The PSVue 550 reagent kit contains components to provide ~0.5 mL of a 1 mM solution of PSVue 550. The compound has an absorbance max at 553 nm and a fluorescence emission max at 615 nm	\$239.00
P-1006	PSVue® 643		The PSVue 643 kit contains 0.25mL of a 1mM solution of PSVue 643 in water. The compound has an absorbance max at 643nm and a fluorescence emission max at 658nm	\$232.00

References:

- Hanshaw RG, Lakshmi C, Lambert TN, Johnson JR and Smith BD. *Fluorescent detection of apoptotic cells by using zinc coordination complexes with a selective affinity for membranes surfaces enriched with phosphatidylserine.* *ChemBioChem*, **2005**, 6, 2214-2220.
- Smith BA, Akers WJ, Leevy WM, Lampkins AJ, Xiao S, Wolter W, Suckow MA, Achilefu S and Smith BD. *Optical imaging of mammary and prostate tumors in living animals using a synthetic near infrared zinc(II)-dipicolylamine probe for anionic cell surfaces.* *J. Am. Chem. Soc.* **2010**, 132 (1), 67-69.
- Leevy WM; Johnson, JR.; Lakshmi, C.; Morris, J.; Marquez, M.; Smith, BD. *Selective recognition of bacterial membranes by zinc(II)-coordination complexes.* *Chem. Commun.* **2006**, 595-1597.
- Leevy WM, Gammon, ST, Jiang H, Johnson JR, Maxwell DJ, Marquez M, Piwinica-Worms D and Smith BD. *Optical imaging of bacterial infection in living mice using a fluorescent near-infrared molecular probe.* *J. Am. Chem. Soc.*, **2006**, 128, 16476-16477.
- Leevy WM, Gammon ST, Johnson JR, Johnson JR, Lampkins AJ, Jiang H, Marquez M, Piwinica-Worms D and Smith BD. *Noninvasive optical imaging of *Staphylococcus aureus* bacterial infection in living mice using a bis-dipicolylamine-zinc (II) affinity group conjugated to a near infrared fluorophore.* *Bioconj. Chem.* **2008**, 19, 686-692
- DiVittorio KM, Johnson JR, Johansson E, Reynolds AJ, Jolliffe KA and Smith BD. *Synthetic peptides with selective affinity for apoptotic cells.* *Org. Biomol. Chem.*, **2006**, 4, 1966-1976.
- Koulov AV, Stucker KA, Lakshmi C, Robinson JP and Smith BD. *Detection of apoptotic cells using a synthetic fluorescent sensor for membrane surfaces that contain phosphatidylserine.* *Cell Death and Differentiation*, **2003**, 10, 1357-1359
- Hanshaw RG and Smith BD. *New reagents for phosphatidylserine recognition and detection of apoptosis.* *Bioorg. & Med. Chem.* **2005**, 13, 5035-5042
- Koulov AV, Hanshaw RG, Stucker KA, Lakshmi C and Smith BD. *Biophysical studies of a synthetic mimic of the apoptosis-detecting protein annexin V.* *Israel. J. of Chem.*, **2005**, 45, 373-379.
- Leevy WM, Lambert TN, Johnson JR, Morris J and Smith BD. *Quantum dot probes for bacteria distinguish *Escherichia coli* mutants and permit *in vivo* imaging.* *Chem. Commun.*, **2008**, 2331-2333.

PSVue® is a trademark of Molecular Targeting Technologies, Inc. PSVue® products are sold under exclusive license from the University of Notre Dame.

COMPANY PROFILE

Molecular Targeting Technologies, Inc. is a privately held US-based Biotechnology Company developing novel medical imaging products.

CORPORATE HEADQUARTERS

833 Lincoln Ave., Unit 9  
West Chester, PA 19380  
P: 610.738.7938 F: 610.738.7928  
Contact us: info@mtarget.com  
www.mtarget.com



**MOLECULAR TARGETING TECHNOLOGIES, INC.**